


GENERAL DETAILS

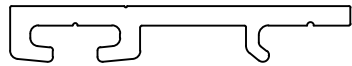
- 2: SYSTEM ISOMETRIC
- 3: ATTACHMENT EXTRUSIONS

SECTION DETAILS

- 4: BASE
- 5: VERTICAL DETAIL
- 6: DISSIMILAR METALS
- 7: PARAPET
- 8: OUTSIDE CORNER DETAIL
- 9: VERTICAL JAMB DETAIL-END
- 10: HORIZONTAL DETAIL
- 11: DIFFERENT DEPTH VERTICAL DETAIL
- 12: DIFFERENT DEPTH HORIZONTAL DETAIL
- 13: INSIDE CORNER DETAIL
- 14: DISSIMILAR METALS-JAMB
- 15: DISSIMILAR METALS-SILL
- 16: SOFFIT DETAIL
- 17: SOFFIT TO WALL DETAIL

*TESTING PERFORMED ON STANDARD SYSTEM DEPTH ONLY. INQUIRE IF ADDITIONAL TESTING IS REQUIRED.

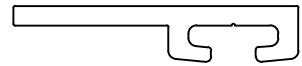
Sheet 1	Drawn By JSJ Date Drawn 2/2/18 Revisions No 1 Date 1/18/21 No Date	Project Number DWG-01	Project ARROWHEAD FLEX ELEVATION CLIP INSTALLATION © Copyright Fairview Architectural LLC - Patented and/or Patent Pending	 www.fairview-na.com
----------------	------------------------------------------------------------------------------------------	------------------------------	---------------------------------------------------------------------------------------------------------------------------------------------	--------------------------------------------------------------------------------------------------------------



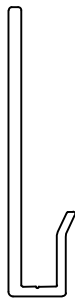
AH-207 STARTER CLIP



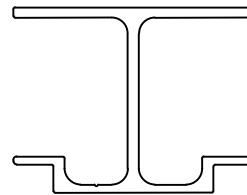
AH-204 VERTICAL CLIP



AH-206 END CLIP



AH-105 J-SILL



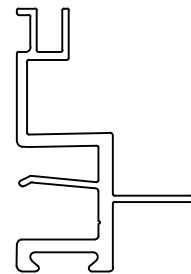
AH-106 STIFFENER





AH-104 T-CLIP



AH-107 PERIMETER CLIP

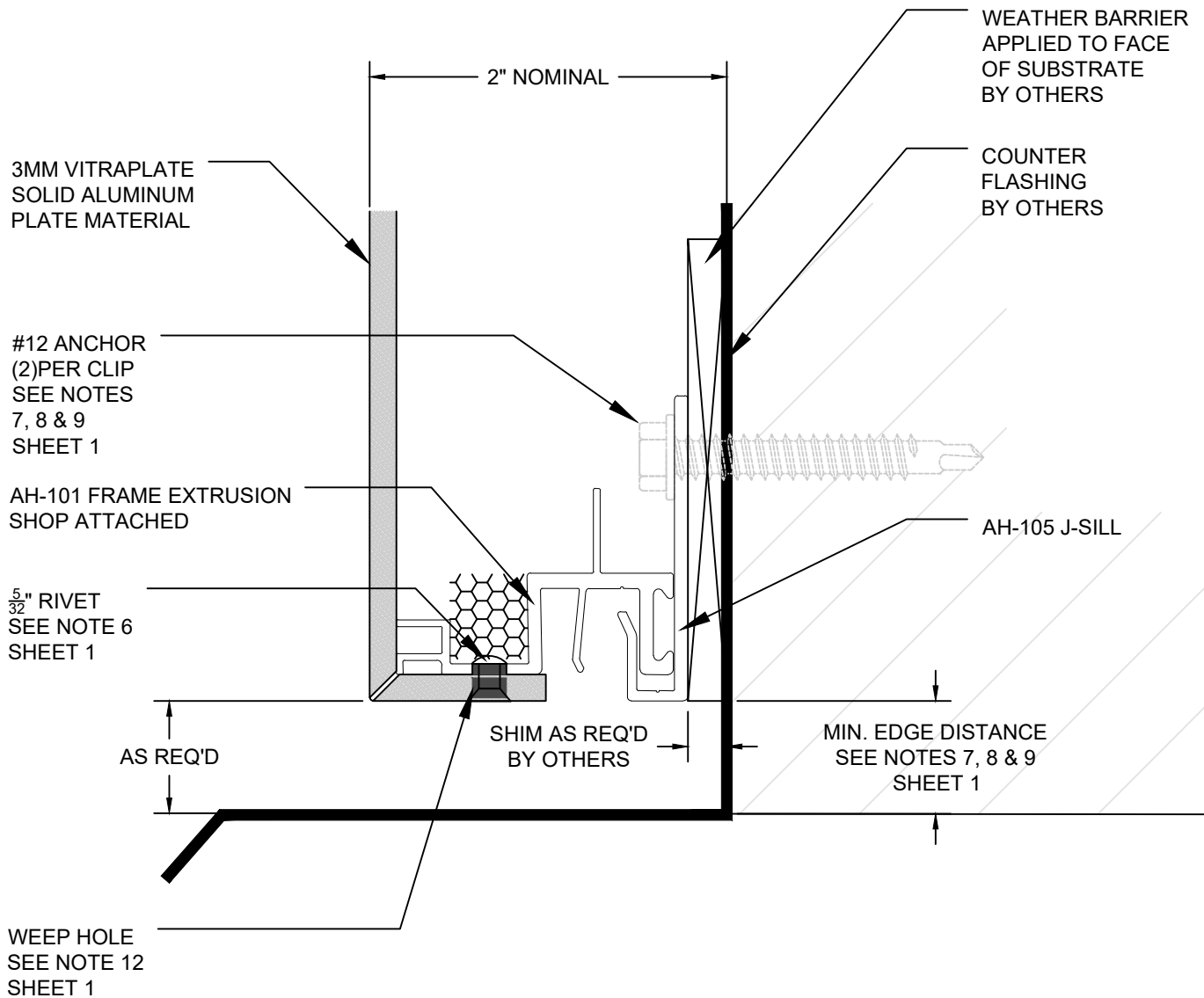


AH-101 FRAME

Sheet 3	Drawn By JSJ	Project Number DWG-01	Project ARROWHEAD FLEX ATTACHMENT EXTRUSIONS © Copyright Fairview Architectural LLC - Patented and/or Patent Pending	  ARCHITECTURAL PANEL SYSTEMS www.fairview-na.com
	Date Drawn 10/12/23			
	Revisions			
	No 1 Date 1/18/21 No Date			

IF SELF TAPPING SCREWS
PENETRATE WEATHER
BARRIER, THESE LOCATIONS
MUST BE SEALED.

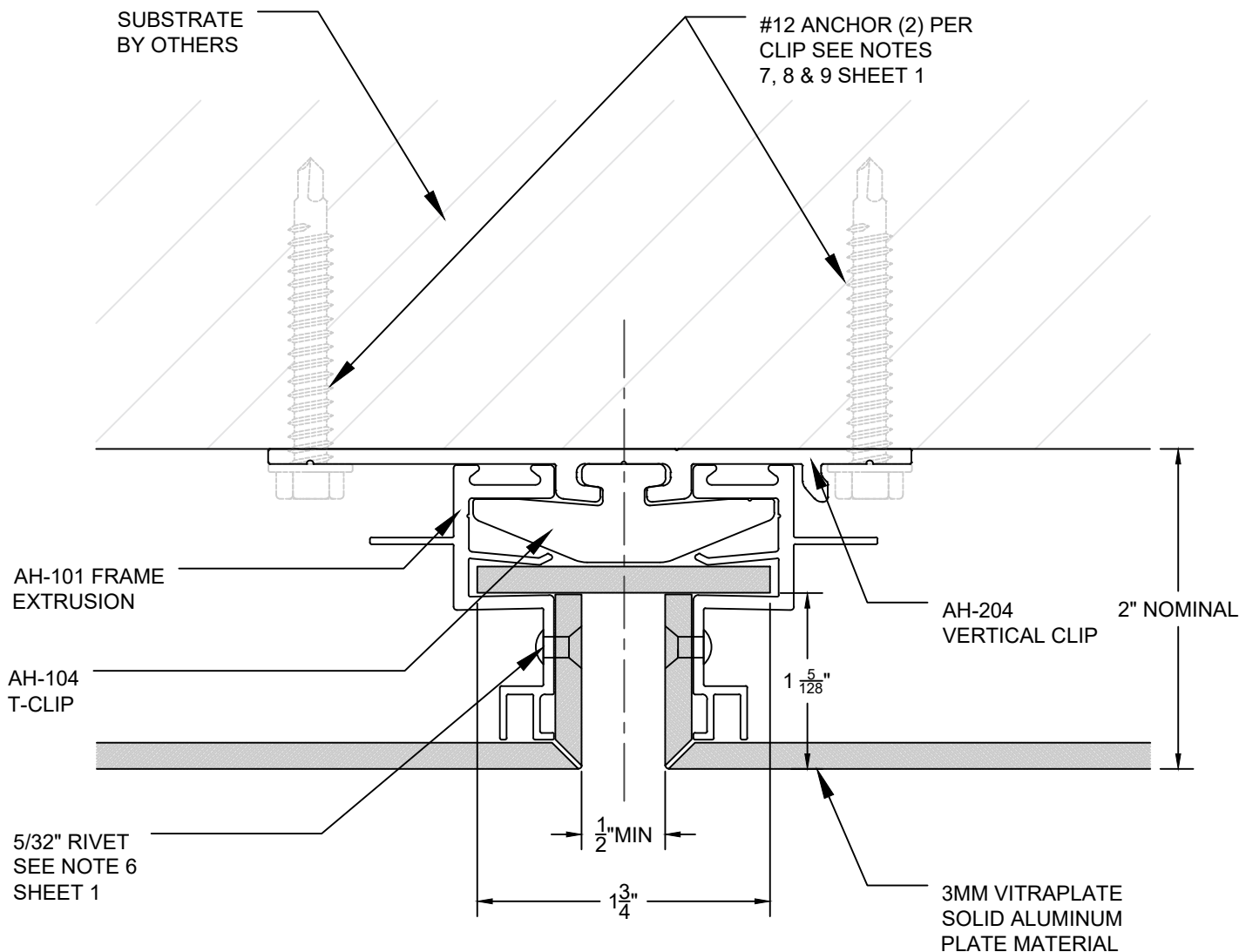
#10 X 3/8" SELF TAPPING
SCREWS MAY BE USED WITH
EXTERIOR INSULATED WALLS.



Sheet 4	Drawn By JSJ Date Drawn 10/12/23 Revisions No 1 Date 1/18/21 No Date	Project Number DWG-01	Project ARROWHEAD FLEX BASE DETAIL CLIP INSTALLATION © Copyright Fairview Architectural LLC - Patented and/or Patent Pending	 www.fairview-na.com
-----------------------	--------------------------------------------------------------------------------------------	------------------------------	-----------------------------------------------------------------------------------------------------------------------------------------------	--------------------------------------------------------------------------------------------------------------

IF SELF TAPPING SCREWS
PENETRATE WEATHER
BARRIER, THESE LOCATIONS
MUST BE SEALED.

#10 X 3/8" SELF TAPPING
SCREWS MAY BE USED WITH
EXTERIOR INSULATED WALLS.



Sheet

5

Drawn By

JSJ

Date Drawn

10/12/23

Revisions

No 1 Date 1/18/21

No Date

Project Number

DWG-01

Project

ARROWHEAD FLEX VERTICAL DETAIL CLIP INSTALLATION

© Copyright Fairview Architectural LLC - Patented and/or Patent Pending



www.fairview-na.com

IF SELF TAPPING SCREWS
PENETRATE WEATHER
BARRIER, THESE LOCATIONS
MUST BE SEALED.

#10 X 3/8" SELF TAPPING
SCREWS MAY BE USED WITH
EXTERIOR INSULATED WALLS.

WINDOW
SYSTEM
BY OTHERS

BACKER ROD
& SEALANT
BY OTHERS

BACKER ROD
& SEALANT
BY OTHERS

#12 ANCHOR(2)PER
CLIP SEE NOTES
7, 8 & 9 SHEET 1

5/32" RIVET
SEE NOTE 6
SHEET 1

AH-107
PERIMETER
CLIP

AH-101 FRAME
EXTRUSION

3MM VITRAPLATE
SOLID ALUMINUM
PLATE MATERIAL

SHIM BY OTHERS

AH-206
END CLIP

SUBSTRATE
BY OTHERS

WEATHER BARRIER
AS REQUIRED.
DESIGN BY
ARCHITECT

2" NOMINAL

Sheet

6

Drawn By

JSJ

Date Drawn

10/12/23

Revisions

No 1 Date 1/18/21

No Date

Project Number

DWG-01

Project

ARROWHEAD FLEX DISSIMILAR METALS CLIP INSTALLATION

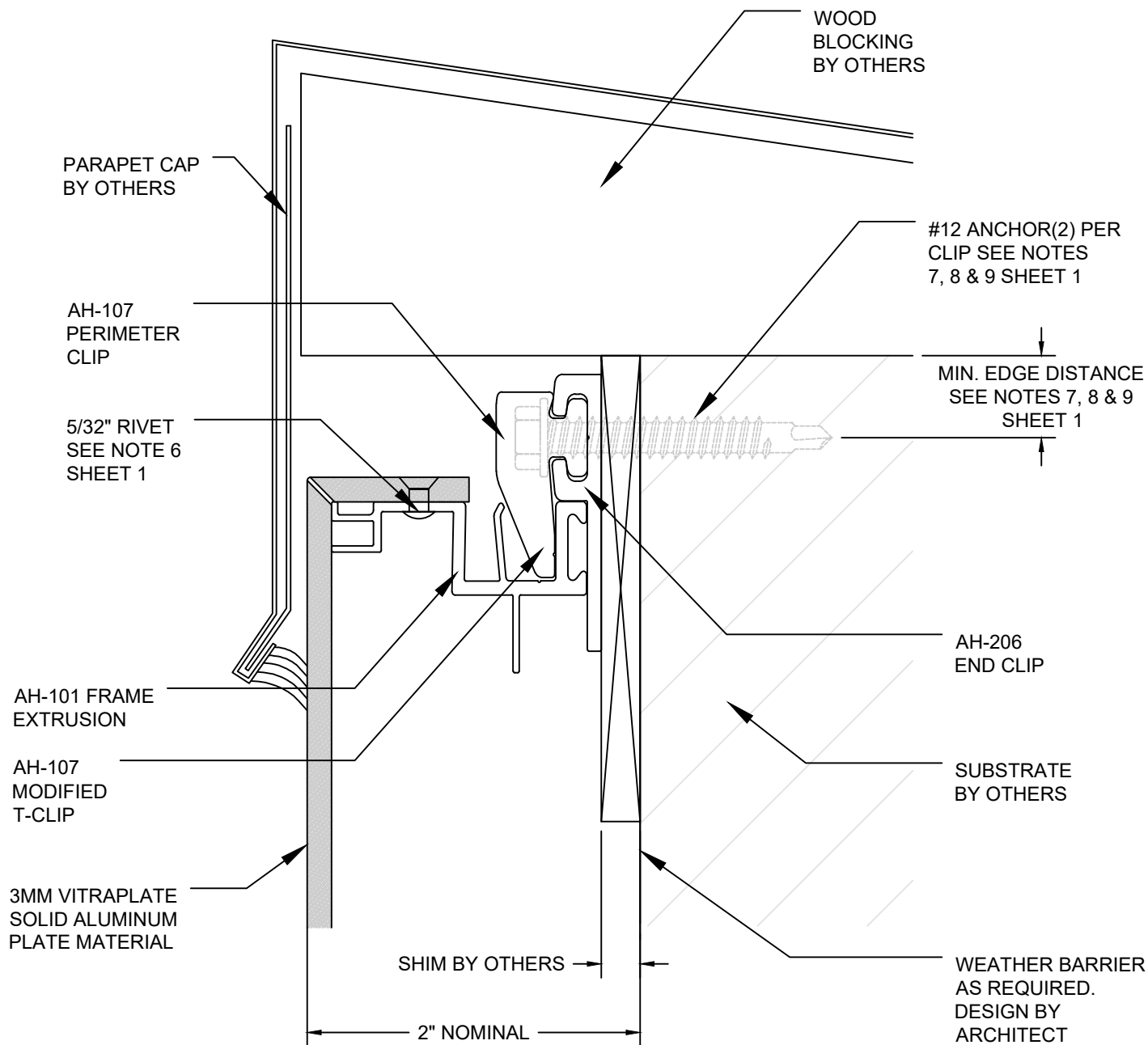
© Copyright Fairview Architectural LLC - Patented and/or Patent Pending




www.fairview-na.com

IF SELF TAPPING SCREWS
PENETRATE WEATHER
BARRIER, THESE LOCATIONS
MUST BE SEALED.

#10 X 3/8" SELF TAPPING
SCREWS MAY BE USED WITH
EXTERIOR INSULATED WALLS.



Sheet 7	Drawn By JSJ Date Drawn 10/12/23 Revisions No 1 Date 1/18/21 No Date	Project Number DWG-01	Project ARROWHEAD FLEX PARAPET DETAIL CLIP INSTALLATION © Copyright Fairview Architectural LLC - Patented and/or Patent Pending	 www.fairview-na.com
-----------------------	--------------------------------------------------------------------------------------------	------------------------------	--------------------------------------------------------------------------------------------------------------------------------------------------	--------------------------------------------------------------------------------------------------------------

IF SELF TAPPING SCREWS
PENETRATE WEATHER
BARRIER, THESE LOCATIONS
MUST BE SEALED

#10 X 3/8" SELF TAPPING
SCREWS MAY BE USED WITH
EXTERIOR INSULATED WALLS.

SUBSTRATE
BY OTHERS

#12 ANCHOR
(2) PER CLIP
SEE NOTES
7, 8 & 9
SHEET 1

WEATHER BARRIER
AS REQUIRED.
DESIGN BY
ARCHITECT

2" NOMINAL

AH-104
T-CLIP

AH-204
VERTICAL
CLIP

MIN. EDGE DISTANCE
SEE NOTES 7, 8 & 9
SHEET 1

AH-204
VERTICAL
CLIP

AH-104
T-CLIP

$\frac{5}{32}$ " RIVET
SEE NOTE 6
SHEET 1

3MM VITRAPLATE
SOLID ALUMINUM
PLATE MATERIAL

$\frac{1}{2}$ " MIN

Sheet

8

Drawn By

JSJ

Date Drawn

10/12/23

Revisions

No 1 Date 1/18/21

No Date

Project Number

DWG-01

Project

ARROWHEAD FLEX OUTSIDE CORNER DETAIL
CLIP INSTALLATION

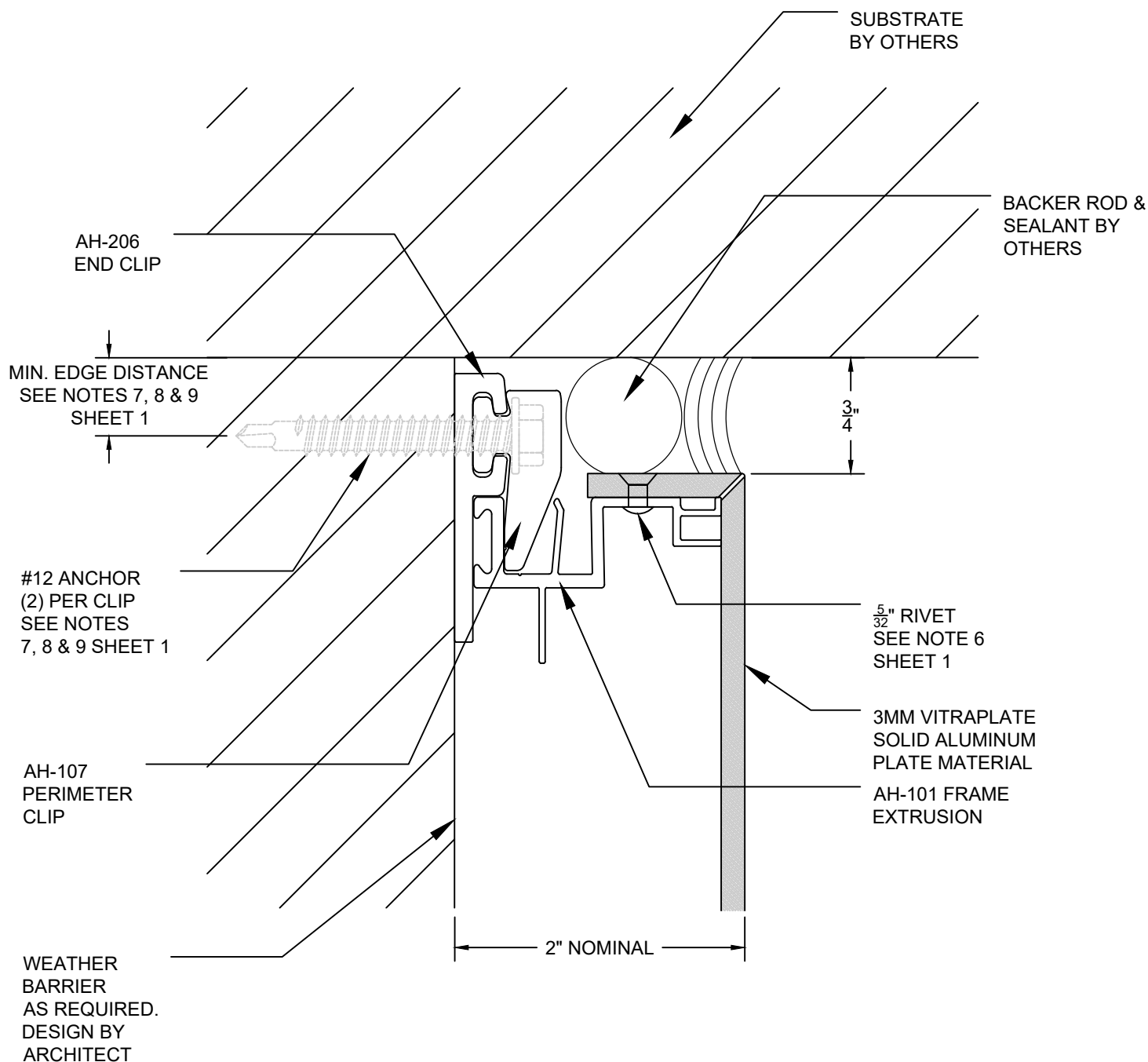
© Copyright Fairview Architectural LLC - Patented and/or Patent Pending


FAIRVIEW
ARCHITECTURAL
arrowhead
ARCHITECTURAL PANEL SYSTEMS

www.fairview-na.com

IF SELF TAPPING SCREWS
PENETRATE WEATHER
BARRIER, THESE LOCATIONS
MUST BE SEALED.

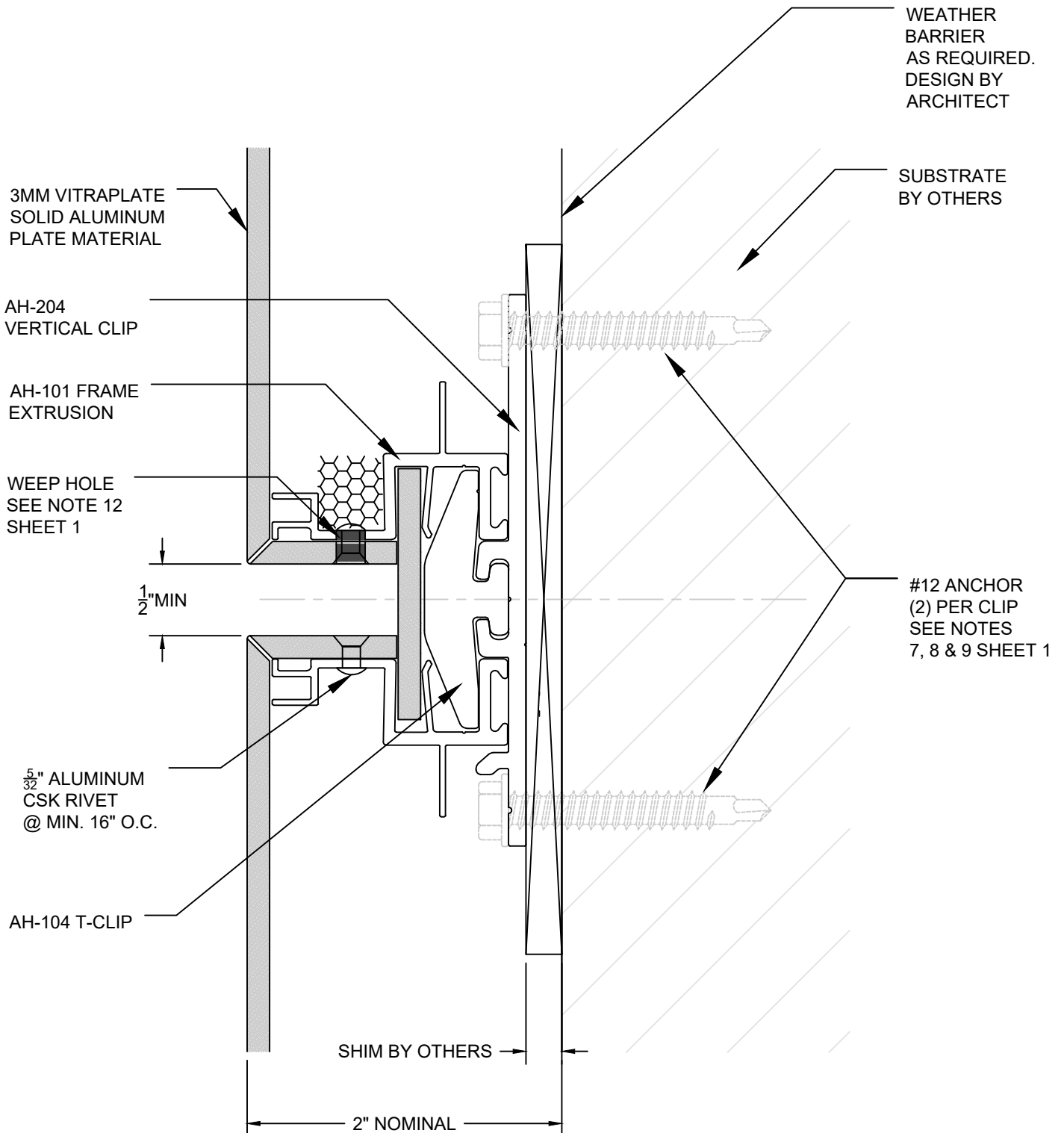
#10 X 3/8" SELF TAPPING
SCREWS MAY BE USED WITH
EXTERIOR INSULATED WALLS.



Sheet 9	Drawn By JSJ Date Drawn 10/12/23 Revisions No 1 Date 1/18/21 No Date	Project Number DWG-01	Project ARROWHEAD FLEX VERTICAL JAMB DETAIL-END - CLIP INSTALLATION © Copyright Fairview Architectural LLC - Patented and/or Patent Pending	 www.fairview-na.com
----------------	--------------------------------------------------------------------------------------------	------------------------------	--------------------------------------------------------------------------------------------------------------------------------------------------------------	--------------------------------------------------------------------------------------------------------------

IF SELF TAPPING SCREWS
PENETRATE WEATHER
BARRIER, THESE LOCATIONS
MUST BE SEALED.

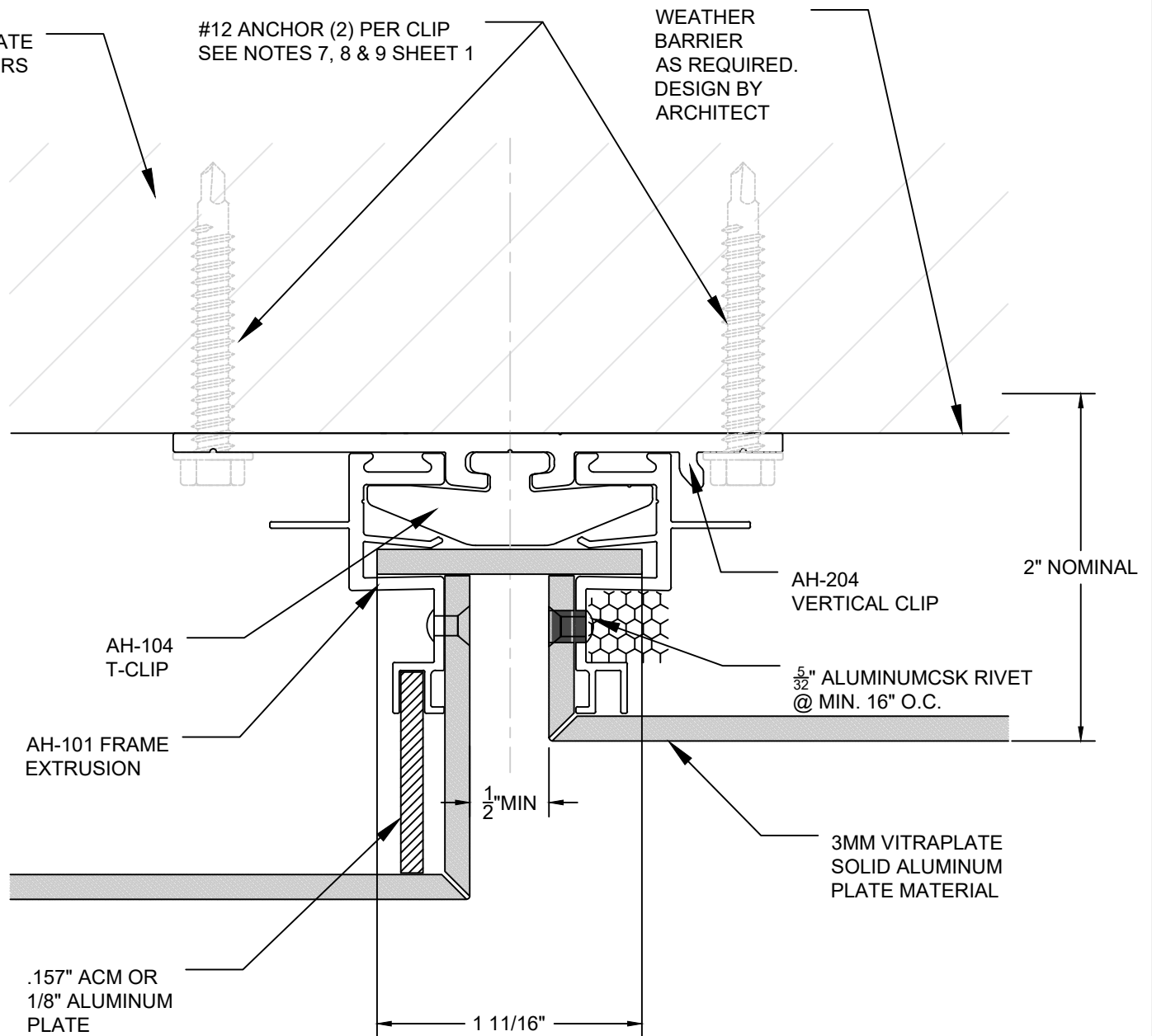
#10 X 3/8" SELF TAPPING
SCREWS MAY BE USED WITH
EXTERIOR INSULATED WALLS.




Sheet <div>10</div>	Drawn By JSJ Date Drawn 10/12/23 Revisions No 1 Date 1/18/21 No Date	Project Number DWG-01	Project ARROWHEAD FLEX HORIZONTAL DETAIL CLIP INSTALLATION © Copyright Fairview Architectural LLC - Patented and/or Patent Pending	<div>   <small>ARCHITECTURAL PANEL SYSTEMS</small> </div> <div>www.fairview-na.com</div>
----------------------------	--------------------------------------------------------------------------------------------	------------------------------	-----------------------------------------------------------------------------------------------------------------------------------------------------	--------------------------------------------------------------------------------------------------------------------------------------------------------------------------------------------------------------------------------------------------------------------------------

IF SELF TAPING SCREWS
PENETRATE WEATHER
BARRIER, THESE LOCATIONS
MUST BE SEALED.

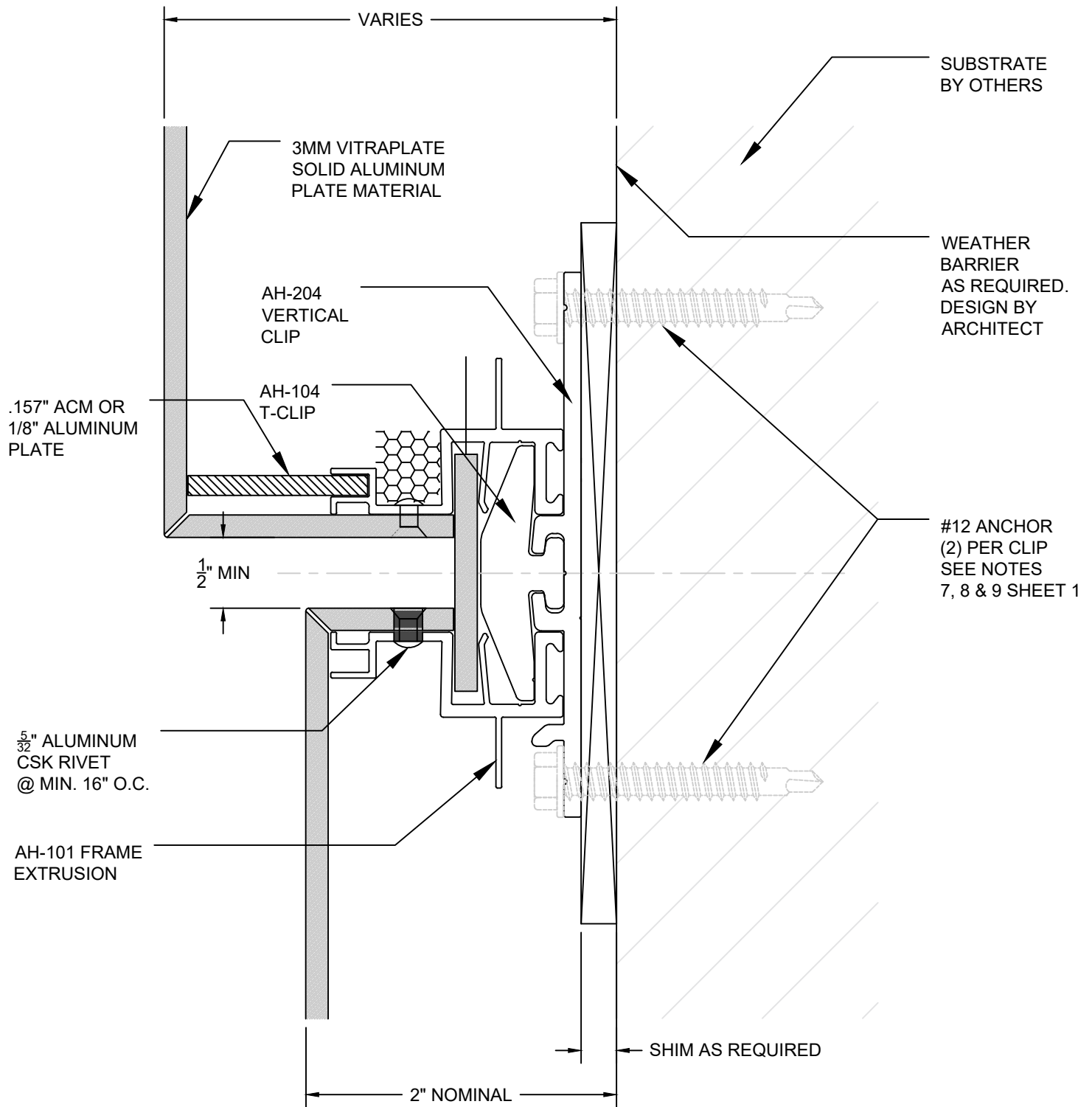
#10 X 3/8" SELF TAPPING
SCREWS MAY BE USED WITH
EXTERIOR INSULATED WALLS.




Sheet 11	Drawn By JSJ Date Drawn 10/12/23 Revisions No 1 Date 1/18/21 No Date	Project Number DWG-01	Project ARROWHEAD FLEX DIFFERENT DEPTH VERTICAL DETAIL-CLIP INSTALLATION © Copyright Fairview Architectural LLC - Patented and/or Patent Pending	
-----------------	--------------------------------------------------------------------------------------------	------------------------------	-------------------------------------------------------------------------------------------------------------------------------------------------------------------	---------------------------------------------------------------------------------------

IF SELF TAPPING SCREWS
PENETRATE WEATHER
BARRIER, THESE LOCATIONS
MUST BE SEALED.

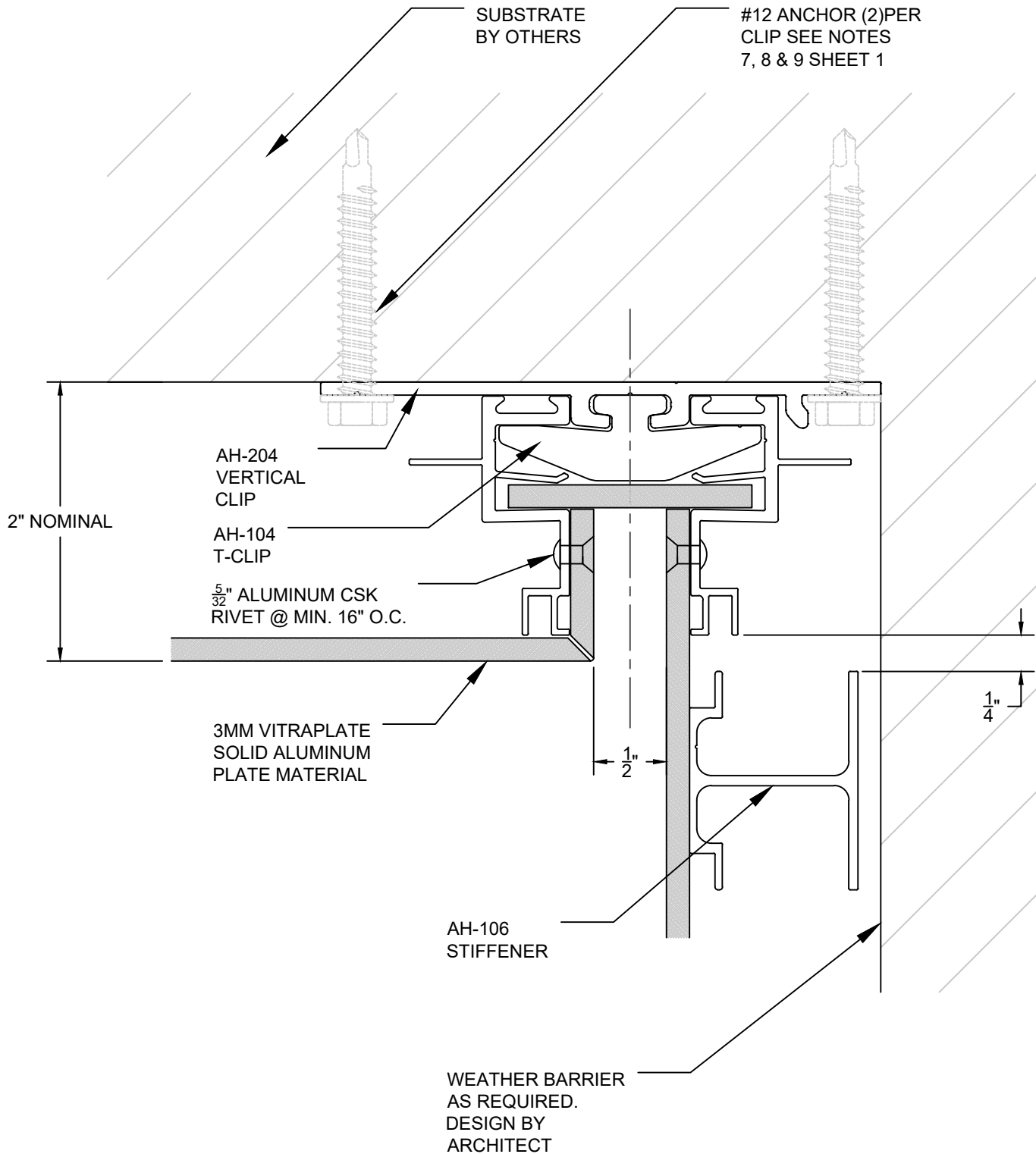
#10 X 3/8" SELF TAPPING
SCREWS MAY BE USED WITH
EXTERIOR INSULATED WALLS.



Sheet 12	Drawn By JSJ Date Drawn 10/12/23 Revisions No 1 Date 1/18/21 No Date	Project Number DWG-01	Project ARROWHEAD FLEX DIFFERENT DEPTH HORIZONTAL DETAIL - CLIP INSTALLATION © Copyright Fairview Architectural LLC - Patented and/or Patent Pending	
-----------------	--------------------------------------------------------------------------------------------	------------------------------	-----------------------------------------------------------------------------------------------------------------------------------------------------------------------	---------------------------------------------------------------------------------------

IF SELF TAPPING SCREWS
PENETRATE WEATHER
BARRIER, THESE LOCATIONS
MUST BE SEALED

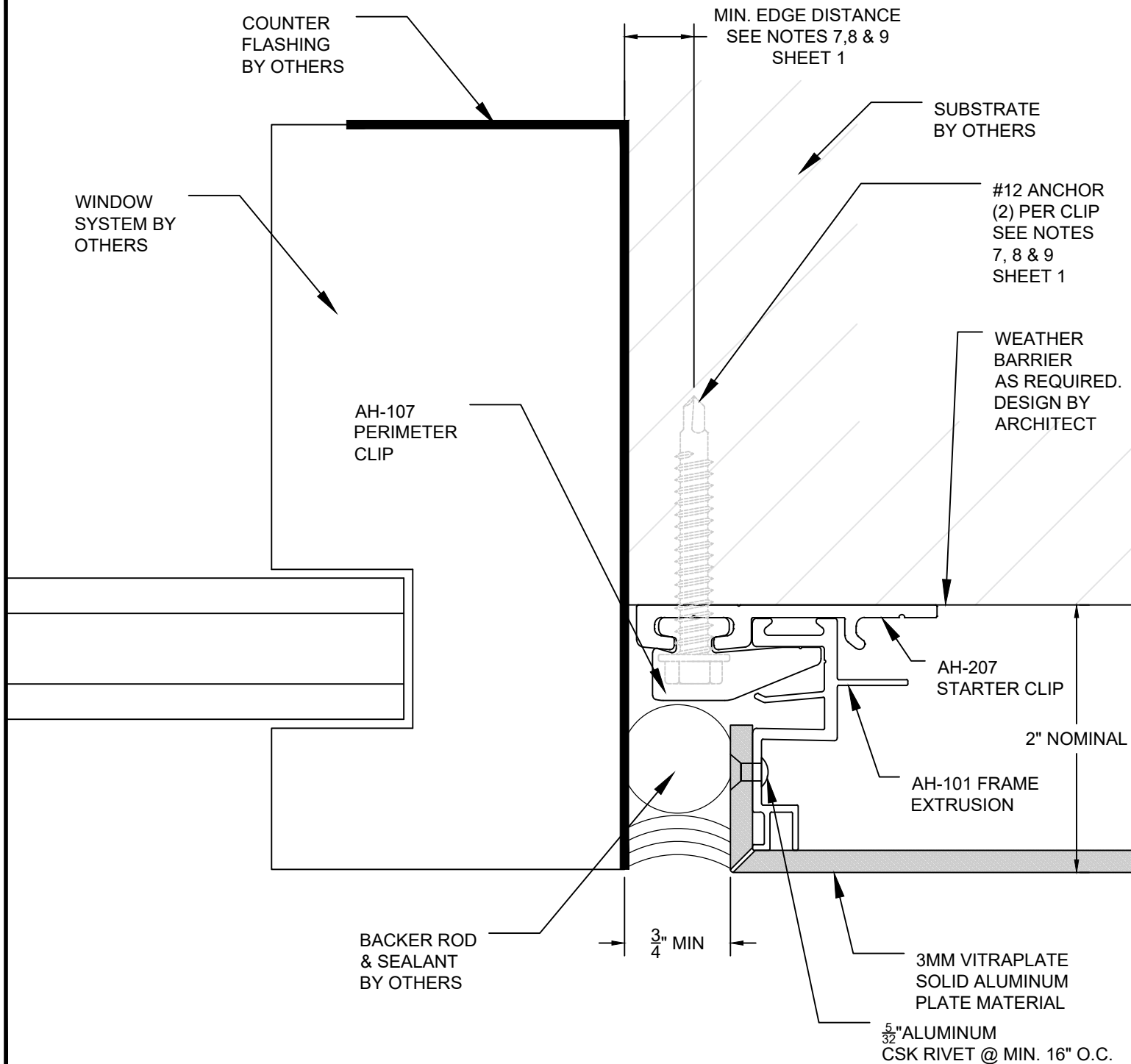
#10 X 3/8" SELF TAPPING
SCREWS MAY BE USED WITH
EXTERIOR INSULATED WALLS.



Sheet 13	Drawn By JSJ Date Drawn 10/12/23 Revisions No 1 Date 1/18/21 No Date	Project Number DWG-01	Project ARROWHEAD FLEX INSIDE CORNER DETAIL CLIP INSTALLATION © Copyright Fairview Architectural LLC - Patented and/or Patent Pending	 www.fairview-na.com
-----------------	--------------------------------------------------------------------------------------------	------------------------------	--------------------------------------------------------------------------------------------------------------------------------------------------------	--------------------------------------------------------------------------------------------------------------

IF SELF TAPPING SCREWS
PENETRATE WEATHER
BARRIER, THESE LOCATIONS
MUST BE SEALED

#10 X 3/8" SELF TAPPING
SCREWS MAY BE USED WITH
EXTERIOR INSULATED WALLS



Sheet

14

Drawn By

JSJ

Date Drawn

10/12/23

Revisions

No 1 Date 1/18/21

No Date

Project Number

DWG-01

Project

ARROWHEAD FLEX DISSIMILAR METALS-JAMB - CLIP INSTALLATION

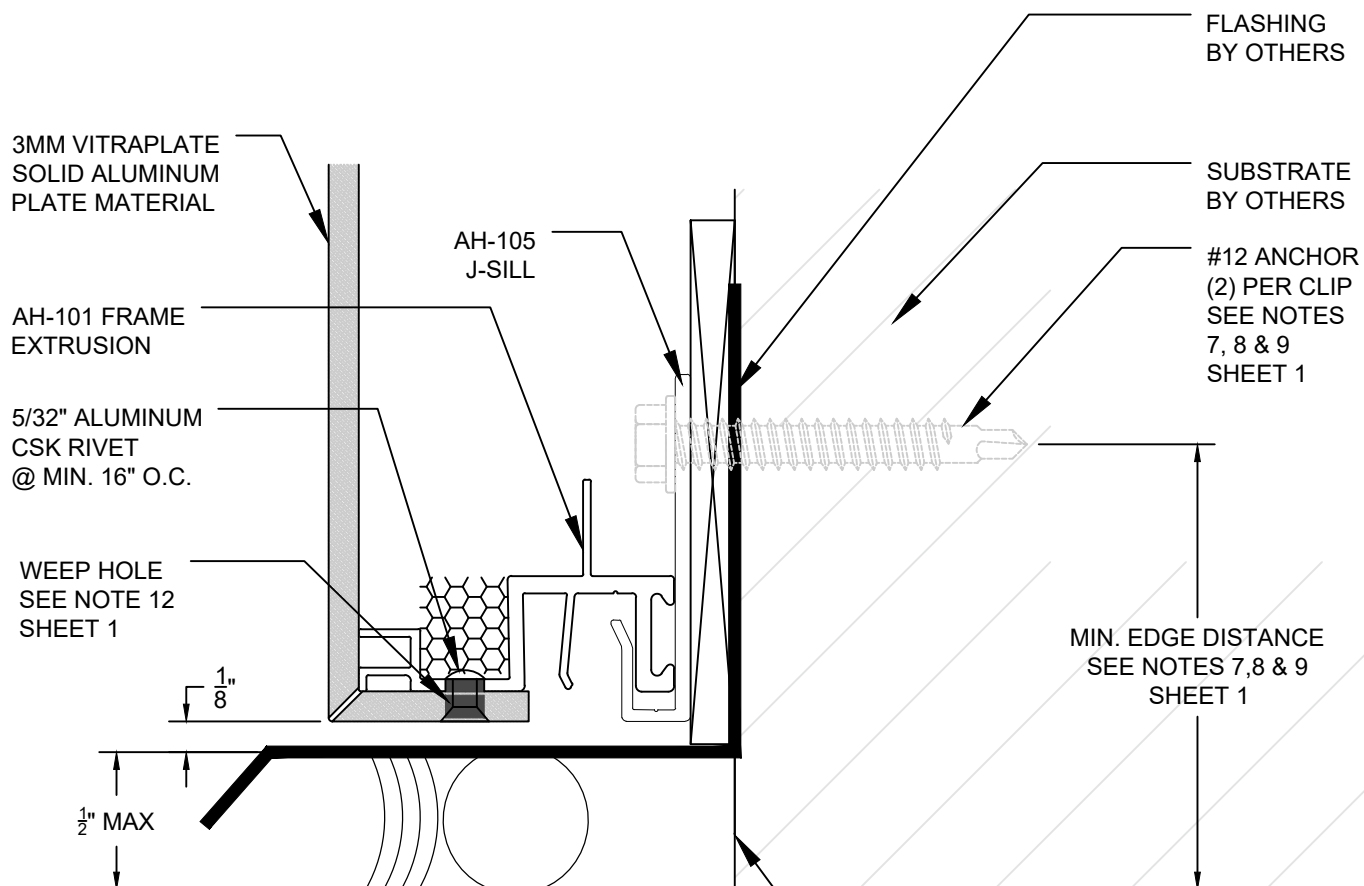
© Copyright Fairview Architectural LLC - Patented and/or Patent Pending



www.fairview-na.com

IF SELF TAPPING SCREWS
PENETRATE WEATHER
BARRIER, THESE LOCATIONS
MUST BE SEALED

#10 X 3/8" SELF TAPPING
SCREWS MAY BE USED WITH
EXTERIOR INSULATED WALLS.



WEATHER
BARRIER
AS REQUIRED.
DESIGN BY
ARCHITECT

WINDOW SYSTEM
BY OTHERS

Sheet

15

Drawn By

JSJ

Date Drawn

10/12/23

Revisions

No 1 Date 1/18/21
No Date

Project Number

DWG-01

Project

ARROWHEAD FLEX DISSIMILAR METALS-SILL - CLIP INSTALLATION

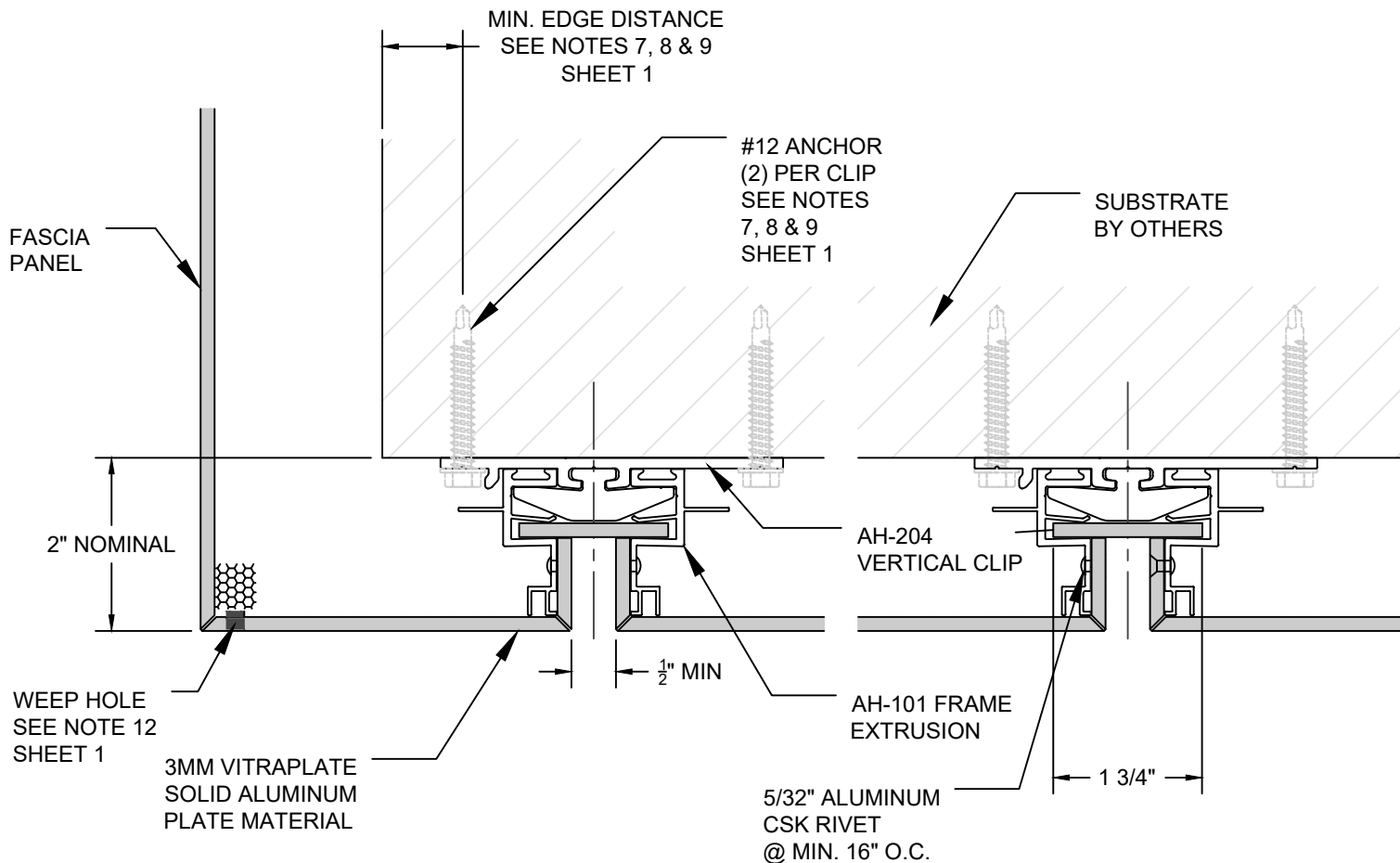
© Copyright Fairview Architectural LLC - Patented and/or Patent Pending

FAIRVIEW
ARCHITECTURAL
arrowhead
ARCHITECTURAL PANEL SYSTEMS

www.fairview-na.com

IF SELF TAPPING SCREWS
PENETRATE WEATHER
BARRIER, THESE LOCATIONS
MUST BE SEALED

#10 X 3/8" SELF TAPPING
SCREWS MAY BE USED WITH
EXTERIOR INSULATED WALLS.



Sheet

16

Drawn By

JSJ

Date Drawn

10/12/23

Revisions

No 1 Date 1/18/21

No Date

Project Number

DWG-01

Project

ARROWHEAD FLEX SOFFIT DETAIL CLIP INSTALLATION

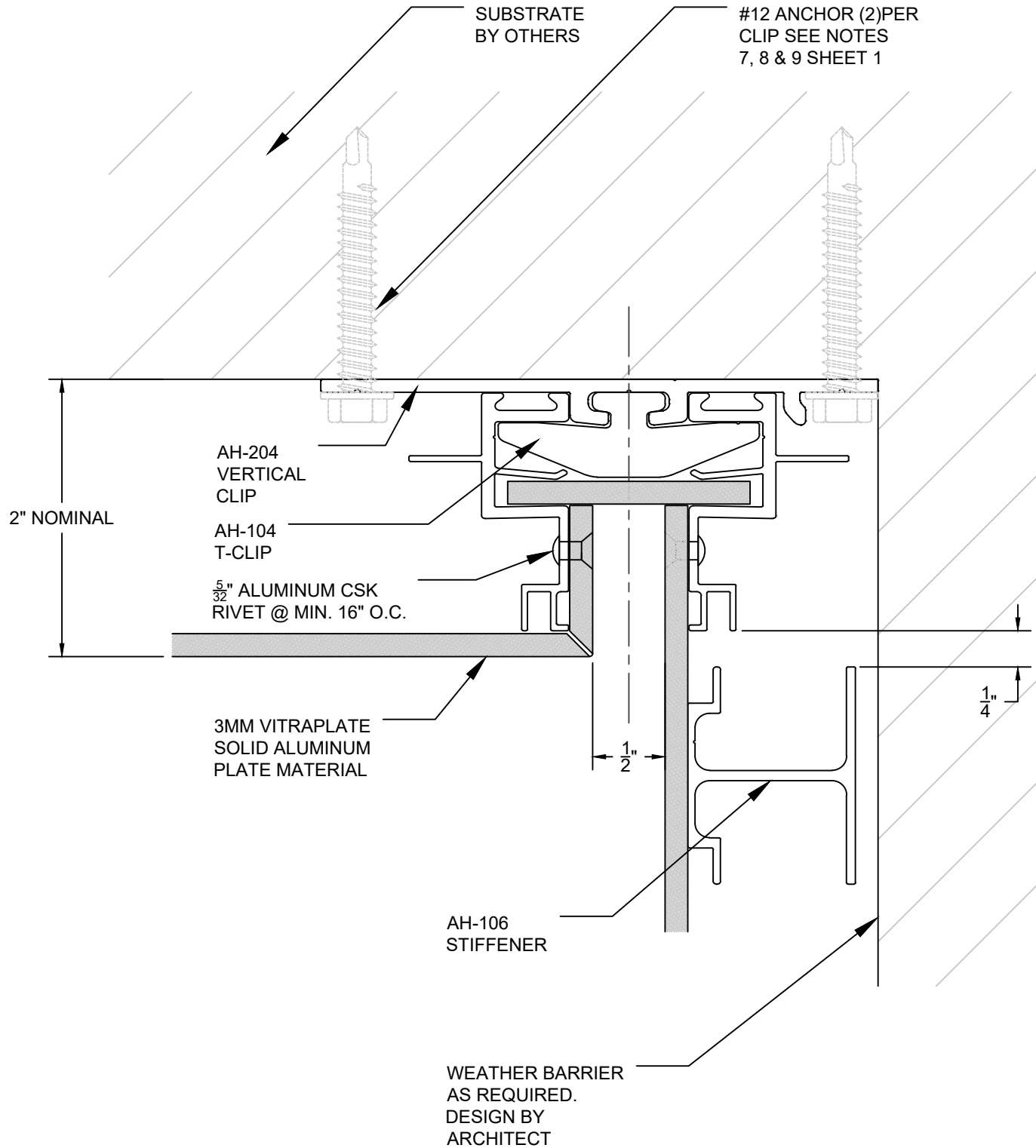
© Copyright Fairview Architectural LLC - Patented and/or Patent Pending



www.fairview-na.com

IF SELF TAPPING SCREWS
PENETRATE WEATHER
BARRIER, THESE LOCATIONS
MUST BE SEALED

#10 X 3/8" SELF TAPPING
SCREWS MAY BE USED WITH
EXTERIOR INSULATED WALLS.



Sheet 17	Drawn By JSJ Date Drawn 10/12/23 Revisions No 1 Date 1/18/21 No Date	Project Number DWG-01	Project ARROWHEAD FLEX SOFFIT TO WALL CLIP INSTALLATION © Copyright Fairview Architectural LLC - Patented and/or Patent Pending	 www.fairview-na.com
-----------------	--------------------------------------------------------------------------------------------	------------------------------	--------------------------------------------------------------------------------------------------------------------------------------------------	--------------------------------------------------------------------------------------------------------------